

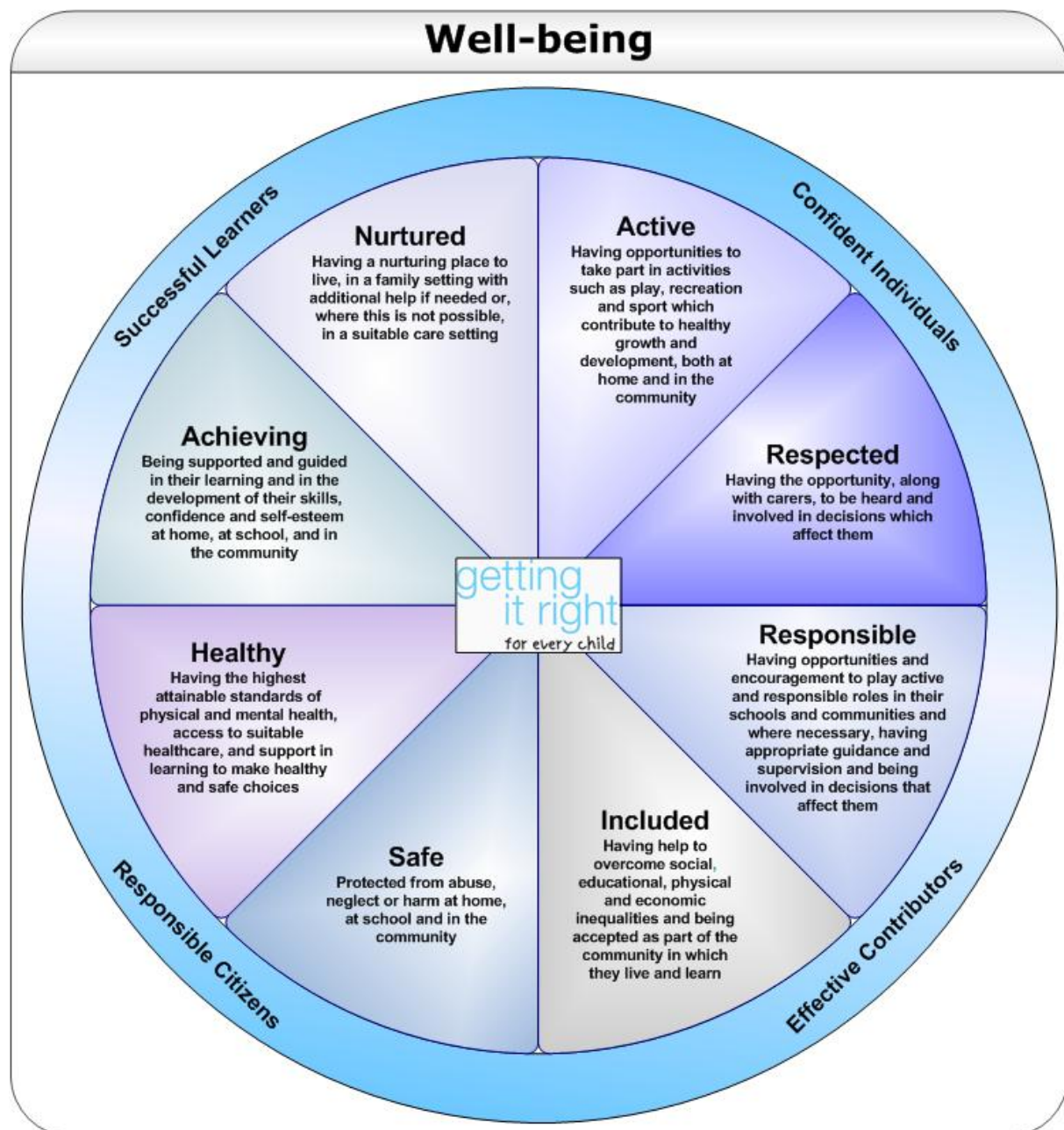
GETTING IT RIGHT FOR CHILDREN IN FIFE

Overview

- Getting it Right for Children in Fife is an approach across Children's Services which will improve outcomes for children and young people most at risk.
- This includes developing a managed system across services where there is a collective accountability to achieve agreed, valued outcomes for children.

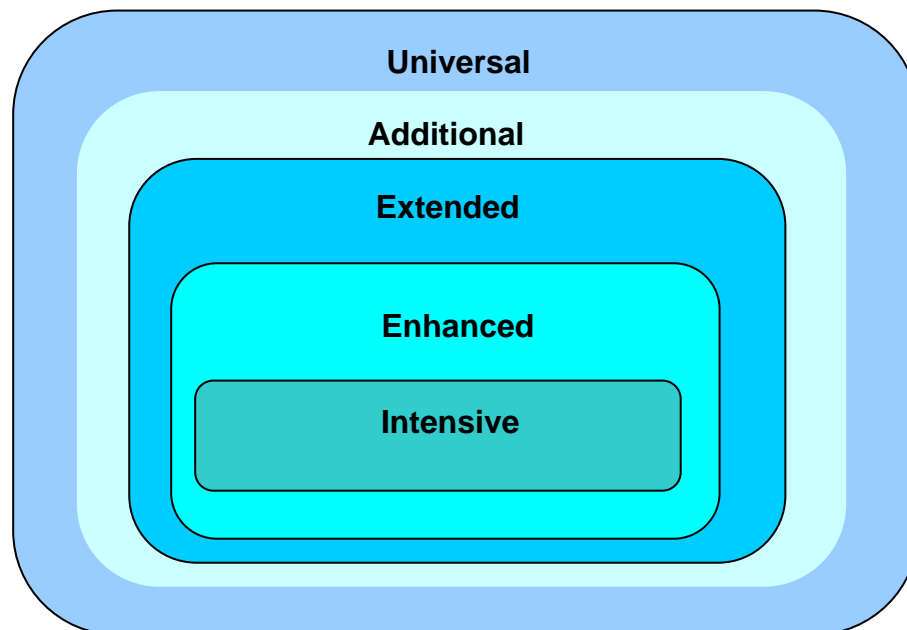
How it Works

- The framework below, based on eight outcomes agreed by the Scottish Government, is known as the SHANARRI framework and has been adopted by Children's Services in Fife.

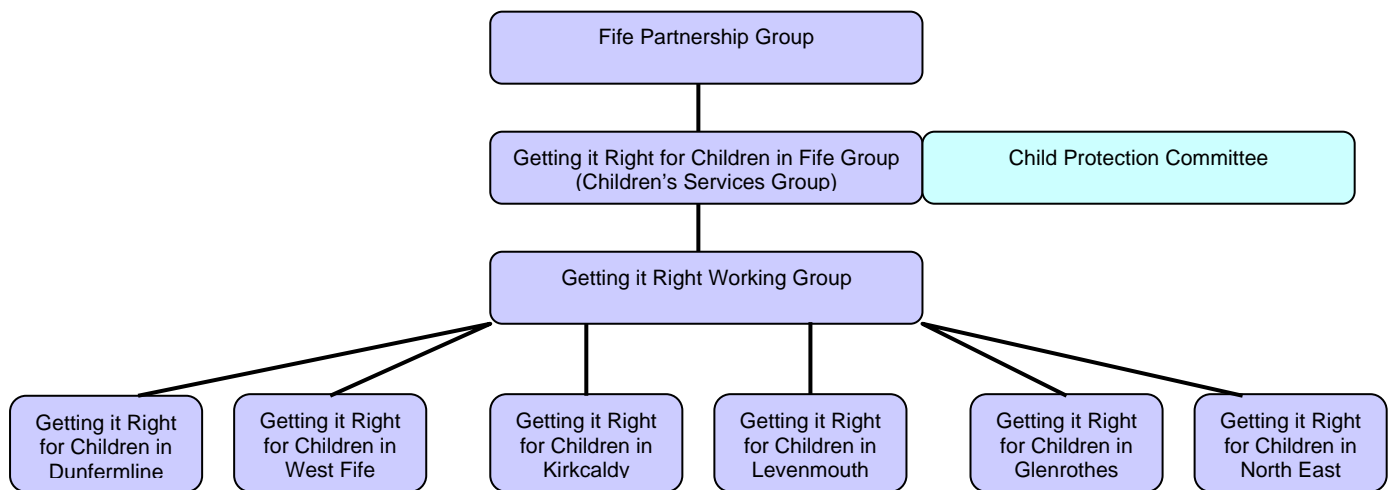


This framework provides a basis for a single child's plan that can be used by all agencies. In due course this will be embedded in an e-care solution, currently in development.

Children's Services in Fife have also agreed to develop a shared model of staged intervention. The strategic aim is to maximise the effectiveness of local and community level support and intervention, beginning with universal services. A key indicator of the success of this strategy will be a reduction in the need for referral to intensive intervention (e.g. Reporter, Acute Clinics). This model looks like this:



- In order to address the priorities of the Children's Services Plan, Fife has developed a system based on:
 - The least intrusive intervention / no order principle
 - Service delivered most locally and speedily
 - Services joined, before or at the point of delivery, so that families and children experience one stop support
 - Integrated assessment / intervention built from components brought from each service
 - Developing teams (rather than simply networks)
 - Agreeing collectively when, what and how support is provided (and withdrawn)
 - Jointly agreed aims and valued outcomes



Working Groups

Each local GIRFCI (Area) Group will have two sub-groups. These will work on Child Protection and Parenting and Early Years in the area. These groups will improve practice, address gaps and develop appropriate responses. They will provide reports to the local GIRIF group.

Fife Child Protection Committee is responsible for the development of Local Child Protection Groups across Fife. Local Child Protection Groups will, therefore, report directly to the Child Protection Committee and also to the Local Getting it Right Working Group.

Work in Progress

- GIRIF working groups;
 - Membership will include core services;
 - Education
 - Social Work
 - Health
 - Police
 - Community Learning and Development
- Each group will also identify voluntary sector representation
- A reporting schedule will provide dates, time and frequency of meetings
- Local groups will identify key issues and track and monitor developments
- Area profiles will provide data on all services. This will enable groups to identify trends and gaps and report back appropriately

For more information in the first instance, please contact your service representative, or alternatively see below:

- Joyce Greig, Integrated Community Schools Manager
Joyce.Greig@fife.gov.uk (Tel: 08451 55 55 55 ext 493934)
- Jill McArthur, Clerical Assistant
Jill.McArthur@fife.gov.uk (Tel: 08451 55 55 55 ext 493932)